



Taneko Group Company

Our Mission

“To meet requirements to become PLC”

“Customer oriented and service excellence driven company”

“Finding integrated product to support electrical and power demand in Indonesia”

Our Vision

“To be the first Genset Store in Indonesia that goes PLC”

“To be the country first choice when it comes to gensets needs”

“To be the first choice company for business partner in Indonesia for power brand”

ETECH POWER Short History

ETECH POWER (PT. Engineering Teknologi Indonesia) was incorporated in 2010 with expertise man power in the Diesel Generating Set as well as experiences our Group Companies in the past twenty years, we have gained experience in many sectors of the developing many client for gained power.

Our expertise people on many projects has been wide ranging within the country with emphasis on remote area involvement in pursuit of oil and gas or telecommunications clients. ETECH POWER has been involved in mining, telecommunication light industrial projects , hospitality, government, infrastructure companies and many more. The company has primary focused on services. However, in performing service activities, experience has been gained in logistics, expertise man power and engineering.

ETECH POWER consistent to continue to offer services Indonesia wide, in as much as some of our more successful projects have been in remote areas of the country. It is the intent of ETECH POWER to remain flexible, so as to meet market needs.

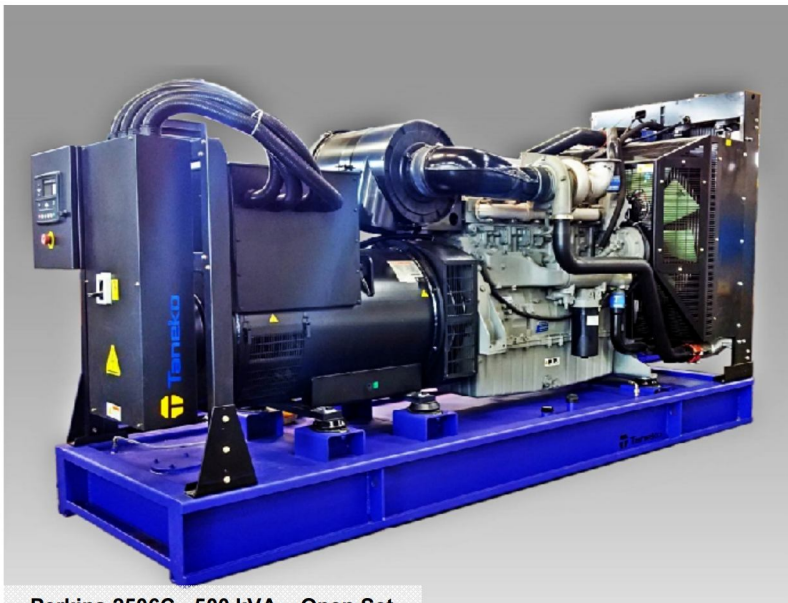
We have gained many experiences from deploying energy needs of various clients in many sectors and we have complete solution for all your power transmission needs to any location in Indonesia.

NEW PRODUCT IMPROVEMENT

At July 2015, ETECH POWER is introducing new product improvement CBUGenset for all rating size. We have improve in new colour painting and new design that applicable for soundproof / canopy model.



MTU 12V 1600 G20F - 650 kVA – Open Set
New BaseframeColour



Perkins 2506C - 500 kVA – Open Set
New BaseframeColour



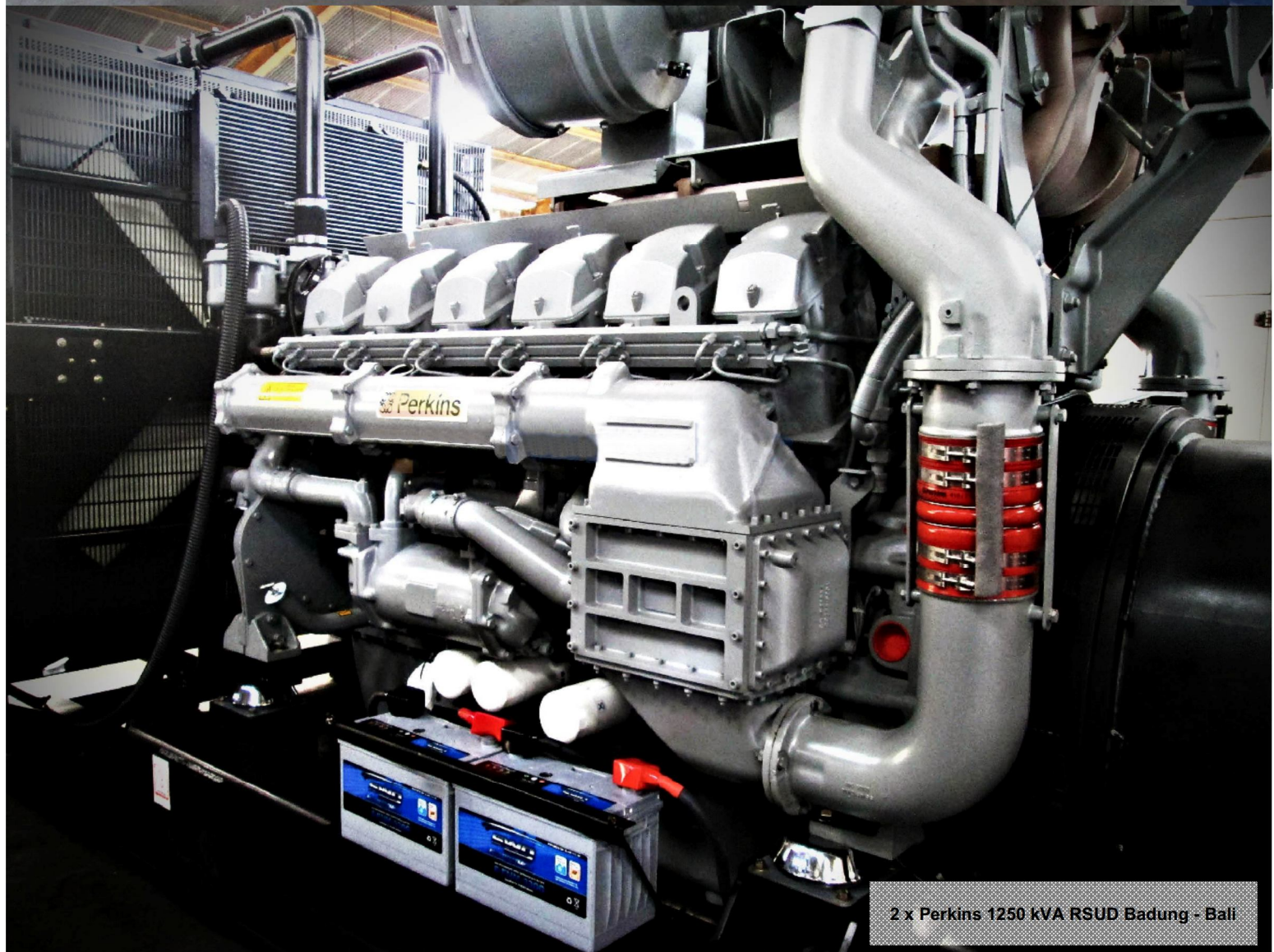
Cummins 250 kVA – Soundproof
New Design & Colour



Cummins 250 kVA – Open Set
New BaseframeColour



2 x Perkins 250 kVA - Proyek Tol Soker



2 x Perkins 1250 kVA RSUD Badung - Bali

“PT. Engineering Teknologi Indonesia”

Dear clients & customers,

Perhaps you are looking for a reputable power generation & energy company because you have a power generation project? We believe trust can be freely but not easily given, especially when dealing with multi million dollar projects and investments. In any or all of these situations, ETECH POWER can be the solution to your project.

Due to the extensive knowledge and experience of its management, we always have a positive feedback from our customers and clients. To support with many known products, we feel our company could penetrate the Indonesian market in the near the future. On our closing note we strongly believe that ETECH POWER has market potential and we are convince that our products will find its niche in the Sunrise Industries.

Last but not least, take a look. See how the experts at ETECH POWER can secure your emergency power needs and help you achieve yours goal. Whether you're dealing with an emergency or planning a year in advance, the equipment simply has to be there when you need it. That is a good reason to rely on the ETECH POWER network.

Welcome to ETECH POWER, your reliable partner at power generation

Bambang Setiabudi
Managing Director

SERVICE & SUPPORT



Service Management

Starting with the design of your generator sets, our engineers will do for you whatever is required by you as our valuable customer. Already at that stage you will profit from the large experience our engineers were able to gather over the years of international project business.

After placing your order, our qualified staff will start to manufacture and assemble the generator sets. Before the final dispatch, all gen-sets are tested at our company's test benches, where you as our customer may watch the test runs from our control room. Only after all parameters fit and all functions have been retested will we prepare the gen-sets for delivery.

Logistics

As a result of the large number of major international projects, we have established an efficient logistics department for worldwide dispatch. Part of our service to our customers is the careful packing and loading of all manufactured goods. Depending on our customer's requests, we also take care of transport, customs clearance and shipment. Furthermore, we prepare and issue the accompanying shipping documents, export declarations and certificates of origin.

Assembly and Customer Acceptance

Our emergency diesel generator sets are assembled and commissioned by our qualified service technicians on site. At this stage, we usually perform our supervisory service. This includes i.a. extensive and thorough training of the local personnel responsible for operation on site by our engineers. Only then do we effect the official handover to the customer.

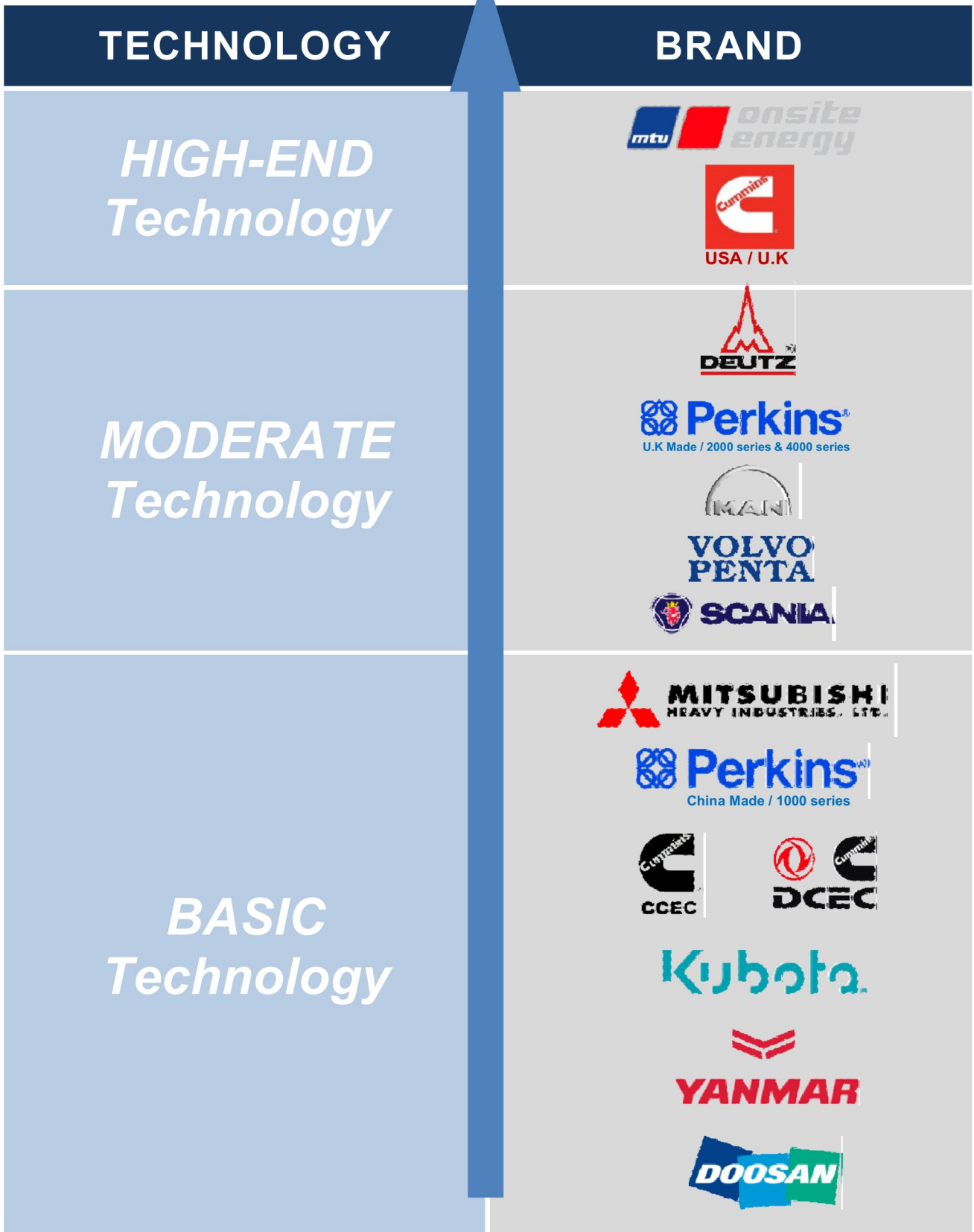
In case of any technical problems, ETECH POWER service network undertakes the professional repair and maintenance work of the relevant parts.

Hotline Overview

Our services meet highest quality standards. On-site assembly, training of staff on site and final customer acceptance are all part of our service to the customer.

Our service department is available 24/7 and handles maintenance works, repairs and spare part deliveries quickly and unbureaucratically.

THE BRAND COLLECTION

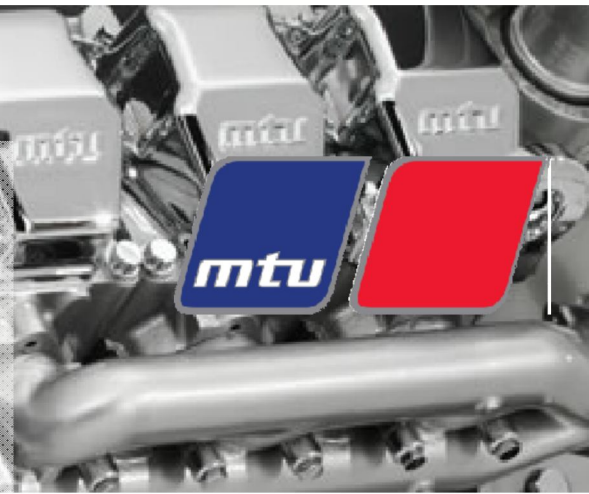


Competition is fierce in the international power generation business and to succeed, it is necessary to have truly creative brands that meet and exceed customers expectations.

Our engine brands which we used have been classified to be easily recognized and valued by our customers – brand which classified by engine performance & technology, price, connect with customers and result in increased sales and profitability.

MTU is one of the world's leading manufacturers of large diesel engines and complete propulsion systems. Together with MTU Onsite Energy, MTU is one of the leading brands of Rolls-Royce Power Systems. MTU Onsite Energy offers complete power system solutions: from mission critical to standby power to continuous power, heating and cooling. Its product range is the widest and most modern in the sector.

It covers diesel engines as well as complete propulsion systems for power generation, ships, for heavy agricultural, rail and military vehicles, and for the oil and gas industry. It use high pressure common rail EFI technology, greatly improved combustion efficiency and lowered fuel consumption and emission. For commercial applications, the top-selling products include Series 2000 (300 to 1,500 kW) and 4000 (700 to 3,500 kW) engines.



No.	Engine Family	Output Range (Prime Power Application)		Cylinders
		kVA	kWe	
1	6R 1600 Series	275 - 300	220 - 240	L6
2	8V 1600 Series	365 - 400	292 - 320	V8
3	10V 1600 Series	450 - 500	360 - 400	V10
4	12V 1600 Series	590 - 650	472 - 520	V12
5	12V 2000 Series	650 - 800	520 - 640	V12
6	16V 2000 Series	910 - 1250	728 - 1000	V16
7	18V 2000 Series	1135 - 1250	908 - 1000	V18
8	12V 4000 Series	1365 - 1800	1092 - 1440	V12
9	16V 4000 Series	2100 - 2250	1680 - 1800	V16
10	20V 4000 Series	2500 - 3000	2000 - 2400	V20

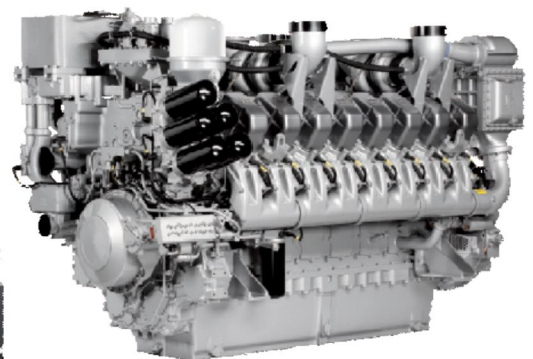
The quoted typical kVA / kW ratings are based on typical generator efficiencies.
The kVA figures are calculated with a 0.8 power factor ; 1500 RPM (50 Hz) ; 220 / 380 V



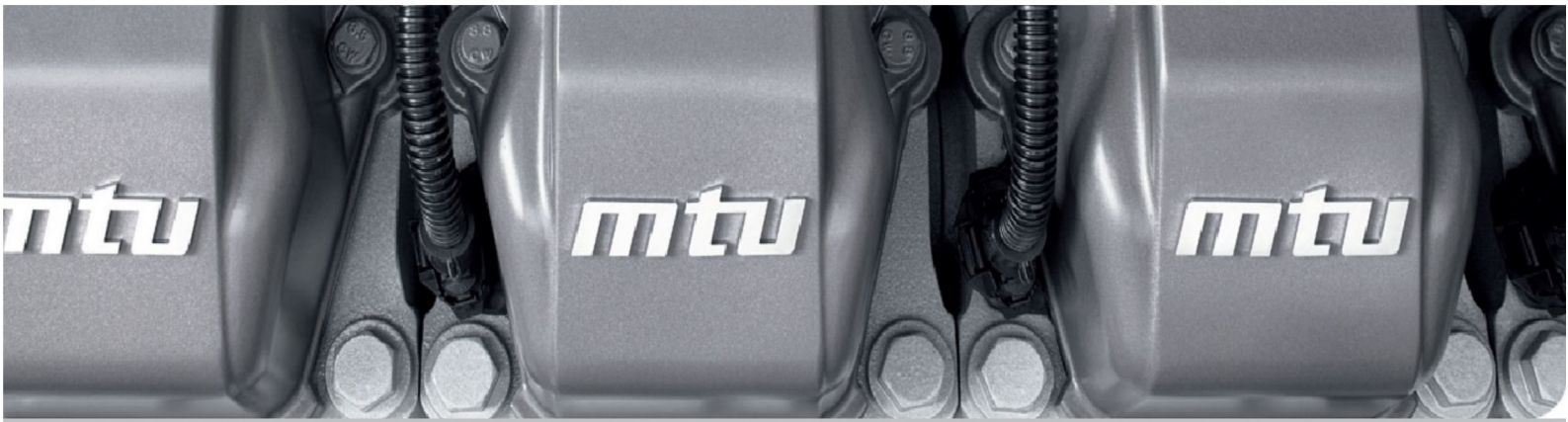
1600 Series



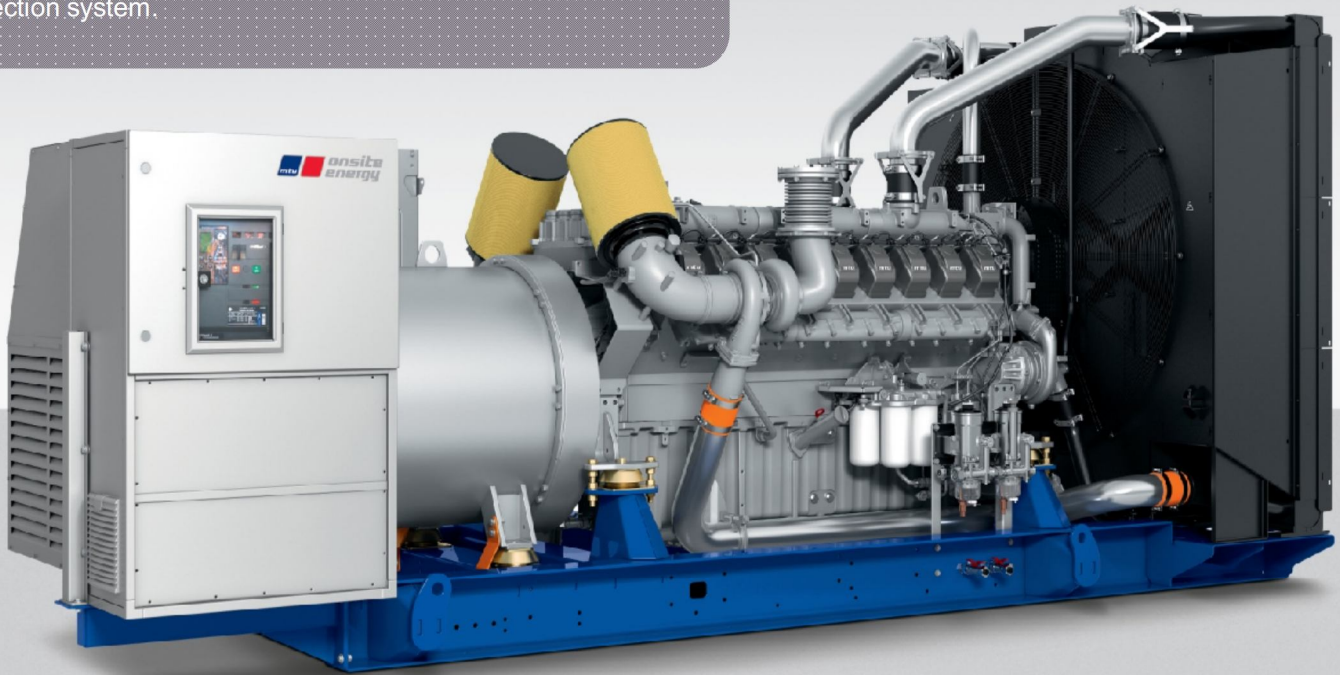
2000 Series



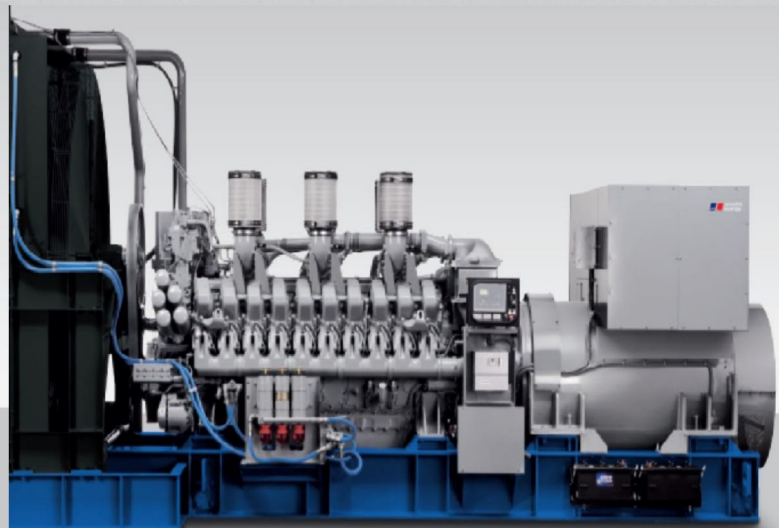
4000 Series



Rolls-Royce is introducing an MTU Onsite Energy CBU genset based on the new 12, 16 and 18-cylinder versions of the Series 2000 engine. The gensets will produce between 750 and 1,400 kVA. They are equipped with a common-rail high-pressure fuel-injection system.



10V 1600 50 Hz



20V 4000 60 Hz

Cummins Inc., Headquartered in Columbus, Indiana, (USA) is a global power leader, is a corporation of complementary business units that design, manufacture, distribute and service diesel and natural gas engines and related technologies, including fuel systems, controls, air handling, filtration, emission solutions and electrical power generation systems.

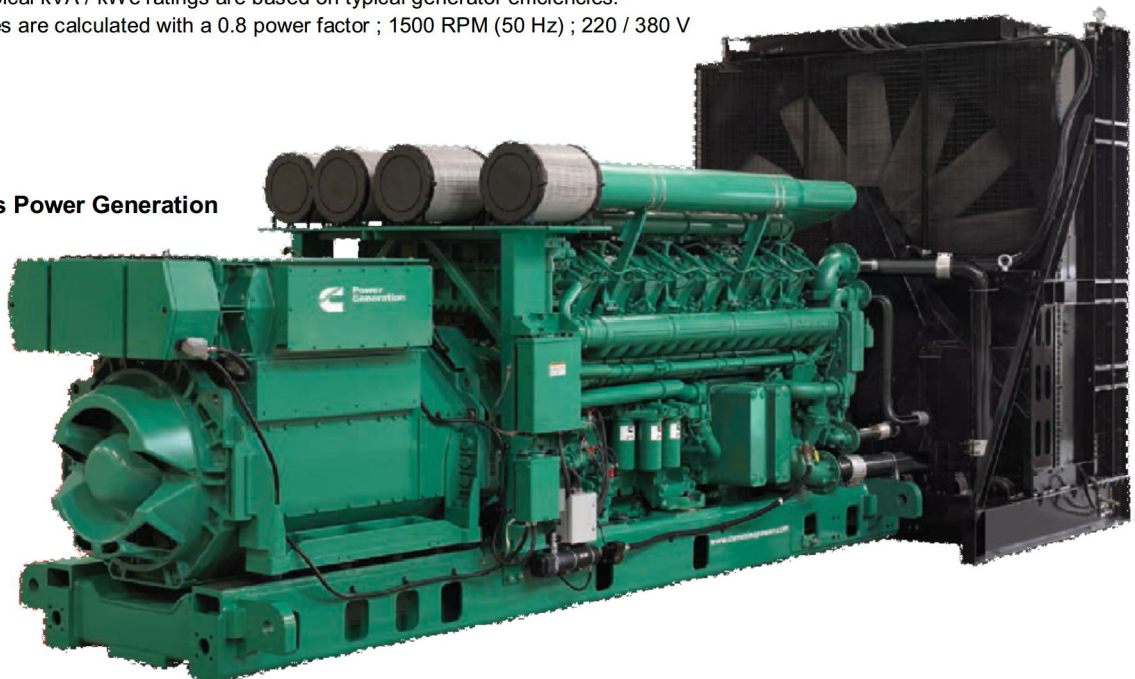
Cummins currently employs approximately 54,600 people worldwide and serves customers in approximately 190 countries and territories through a network of approximately 600 company-owned and independent distributor locations and approximately 7,200 dealer locations.



No.	Engine Family	Output Range (Prime Power Application)		Cylinders
		kVA	kWe	
1	B Series	20 - 140	16 - 112	L4 - L6
2	C Series	160 - 200	128 - 160	L6
3	L Series	250 - 285	200 - 228	L6
4	M Series	250 - 300	200 - 240	L6
5	NTA855 Series	225 - 400	180 - 320	L6
6	QSZ Series	450 - 500	360 - 400	L6
7	KTA19 Series	450 - 650	360 - 480	L6
8	KTA38 Series	750 - 1135	600 - 800	V12
9	KTA50 Series	1250 - 1400	1000 - 1360	V16
10	QSK 38 Series	1000 - 1275	800 - 1020	V12
11	QSK 50 Series	1400 - 1800	1120 - 1440	V16
12	QSK 60 Series	1875 - 2000	1500 - 1600	V16
13	QSK 78 Series	2750	2200	V18
14	QSK 95 Series	3750	3000	V16

The quoted typical kVA / kWe ratings are based on typical generator efficiencies.
The kVA figures are calculated with a 0.8 power factor ; 1500 RPM (50 Hz) ; 220 / 380 V

QSK 95 Series Power Generation



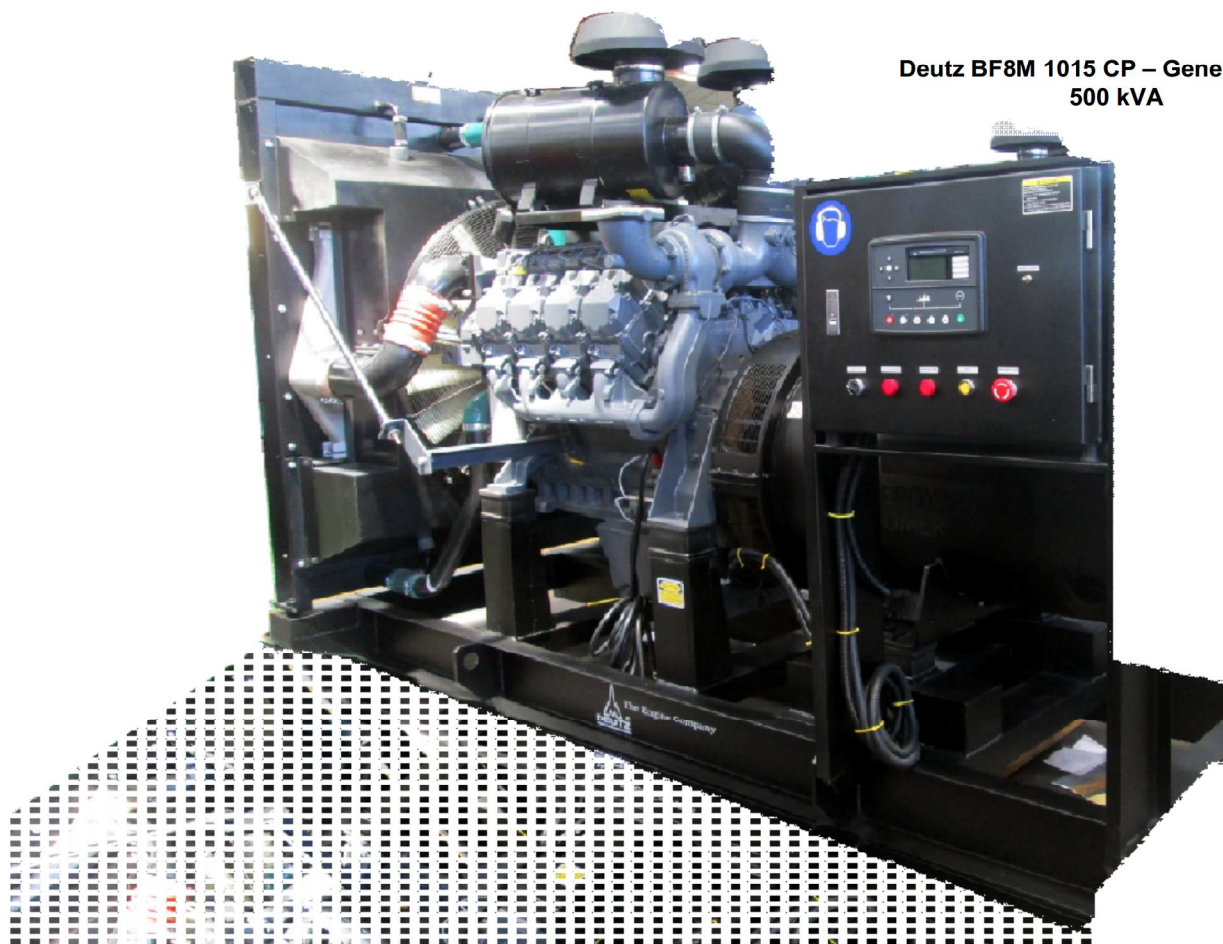
Founded in 1864, Deutz AG was the world's first engine company. Deutz AG is an engine manufacturer, based in Cologne, Germany. Deutz is still one of the world's leading independent engine manufacturers. DEUTZ offers a broad spectrum of liquid-cooled and air-cooled engines. The Deutz brand is a firmly established player in the equipment manufacturing and operating industry – and has been for 150 years. Deutz engines are available in the power range 4 to 500 kW, with air, oil or water cooling.



No.	Engine Family	Output Range (Prime Power Application)		Cylinders
		kVA	kWe	
1	BFM 2011 Series	13 - 60	10.4 - 48	L2 - L4
2	BFL 2011 Series	13 - 40	10.4 - 32	L2 - L4
3	FL 912 Series	30 - 60	24 - 48	L3 - L6
4	BFL 914 Series	30 - 130	24 - 104	L3 - L6
5	BFM 1013 Series	80 - 200	64 - 160	L4 - L6
6	TCD 2013 Series	100 - 250	80 - 200	L 4 - L6
7	BFM 1015 Series	350 - 500	280 - 400	V6 - V8

The quoted typical kVA / kWe ratings are based on typical generator efficiencies.
The kVA figures are calculated with a 0.8 power factor ; 1500 RPM (50 Hz) ; 220 / 380 V

**Deutz BF8M 1015 CP – Generating Set
500 kVA**



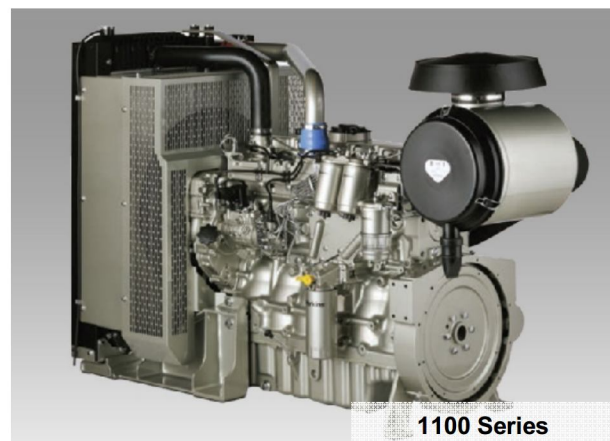
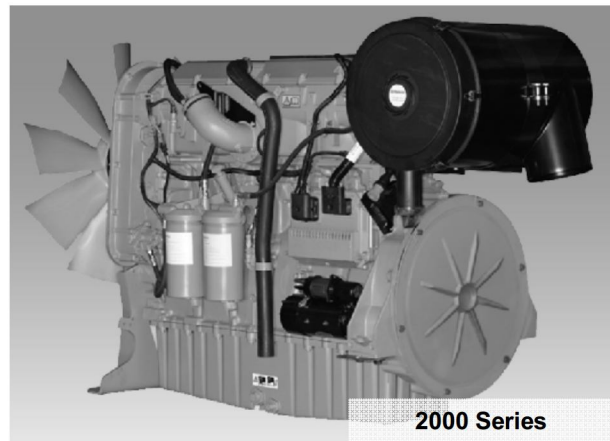
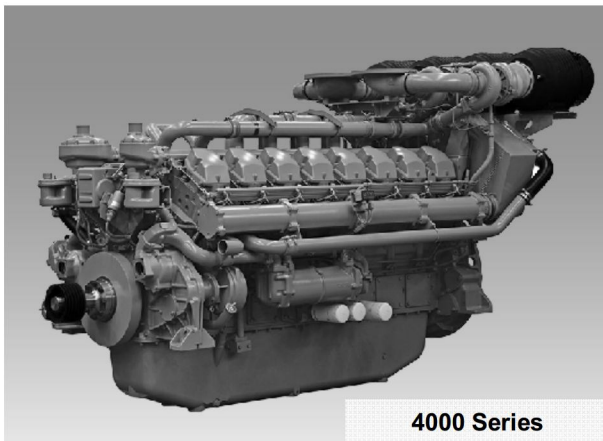
Perkins Engines (officially **Perkins Engines Company Limited**), a subsidiary of Caterpillar Inc., is primarily a diesel engine manufacturer for several markets. It was established in Peterborough in 1932. Over the years Perkins has expanded its engine ranges and produces thousands of different engine specifications including diesel and gas engines.



Perkins provides power solutions whatever the requirement. Today Perkins is recognised as a world leader in the design and manufacture of diesel engines throughout the world. By designing, delivering and supporting medium duty diesel engines and power solutions, Perkins aims to be customer's first choice to power their world.

No.	Engine Family	Output Range		Cylinders
		(Prime Power Application)		
		kVA	kWe	
1	400 Series	9 - 25	7.2 - 20	L2 - L4
2	1100 Series	30 - 200	24 - 160	L3 - L6
3	1500 Series	200 - 300	160 - 240	L6
4	2200 Series	350 - 400	280 - 320	L6
5	2500 Series	450 - 500	360 - 400	L6
6	2800 Series	600 - 650	480 - 520	L6
7	4006 Series	750 - 800	600 - 640	L6
8	4008 Series	900 - 1000	720 - 800	L8
9	4012 Series	1250 - 1700	1000 - 1360	V12
10	4016 Series	1850 - 2250	1480 - 1800	V16

The quoted typical kVA / kWe ratings are based on typical generator efficiencies.
The kVA figures are calculated with a 0.8 power factor ; 1500 RPM (50 Hz) ; 220 / 380 V



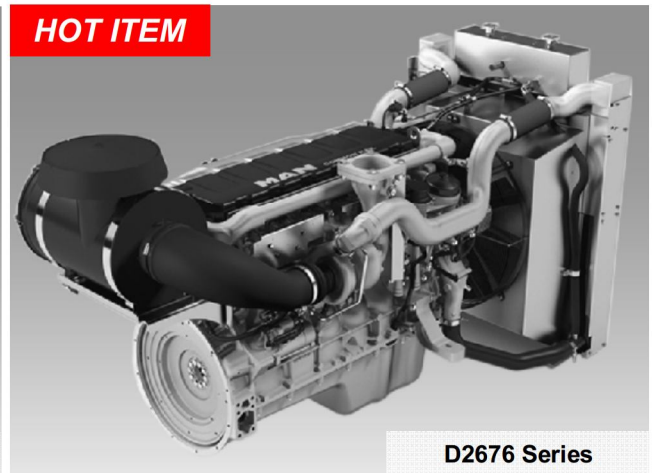
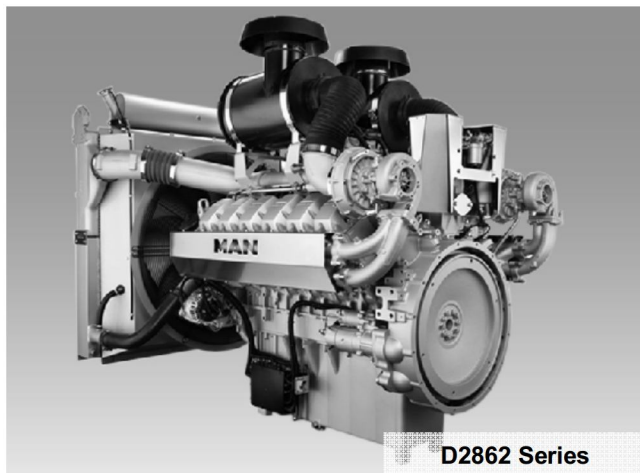
MAN Truck & Bus develops, produces and sells a wide range of efficient diesel and gas engines for extremely varied applications in many industries. MAN engines are used in the following areas, which others: for power generation in cogeneration plants. The factory in Nuremberg, established in 1897, now represents a high standard of manufacturing techniques for top-quality products.



The ratings PRP (Prime Power Application) of the MAN engines with an output range from 280 kW to 800 kW cover short-term peak demands, e.g. at power supply companies and energy-intensive industries. There are 4- and 6-cylinder in-line units and 8-, 10- and 12-cylinder V engines.

No.	Engine Family	Output Range (Prime Power Application)		Cylinders
		kVA	kWe	
1	D2866 Series	310 - 350	248 - 280	L6
2	D2876 Series	400 - 450	320 - 360	L6
3	D2676 Series	410 - 420	328 - 336	L6
4	D2848 Series	450 - 510	360 - 408	V8
5	D2840 Series	520 - 640	416 - 512	V10
6	D2842 Series	630 - 790	504 - 632	V12
7	D2862 Series	800 - 930	640 - 744	V12

The quoted typical kVA / kW ratings are based on typical generator efficiencies.
The kVA figures are calculated with a 0.8 power factor ; 1500 RPM (50 Hz) ; 220 / 380 V



Volvo Penta was founded in 1907 in conjunction with the production of the first marine engine, B1. Volvo acquired Penta in 1935 and Volvo Penta has been part of the Volvo Group since then.

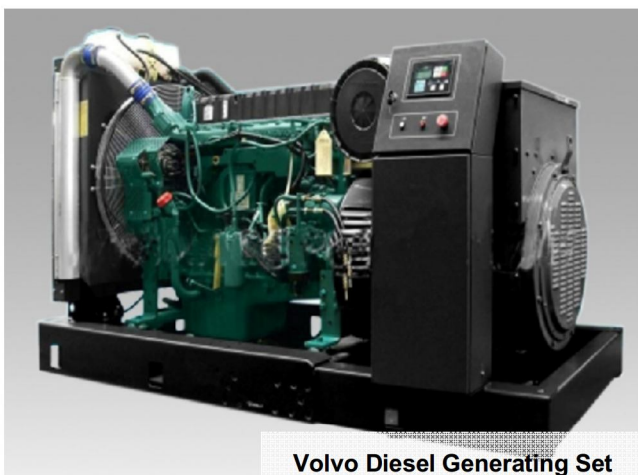
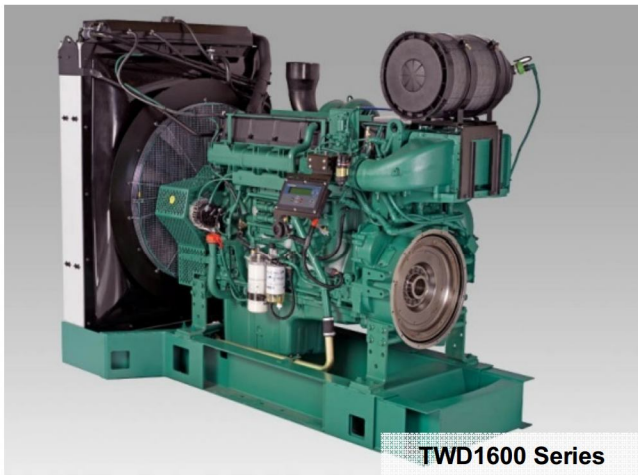
Volvo Penta conducts its operations in two overall business segments: Marine and Industrial. However, the most rapidly growing operation for Volvo Penta in the past decade has been sales of industrial engines, which currently represent about 40% of Volvo Penta's total sales value.



The basis for the industrial engine business is the strength in the Volvo Group's total product and service offering. Assisted by these, Volvo Penta is able to offer high-technological products, as well as global support for such industrial applications as diesel-operated gensets.

No.	Engine Family	Output Range (Prime Power Application)		Cylinders
		kVA	kWe	
1	TD500 Series	80	64	L4
2	TAD500 Series	85 - 125	68 - 100	L4
3	TAD700 Series	130 - 250	104 - 200	L6
4	TAD1300Series	300 - 450	240 - 360	L6
5	TAD1600 Series	450 - 570	360 - 456	L6
6	TWD1600Series	630	504	L6

The quoted typical kVA / kWe ratings are based on typical generator efficiencies.
The kVA figures are calculated with a 0.8 power factor ; 1500 RPM (50 Hz) ; 220 / 380 V



Mitsubishi Heavy Industries, Ltd. (informally **MHI**) is a Japanese multinational engineering, electrical equipment and electronics company headquartered in Tokyo, Japan. Mitsubishi Heavy Industries, Ltd. has continually introduced upgraded its engine products since the inception of business in 1917, and now the MITSUBISHIDIESEL GENERATOR SET provides a higher generating power rating and more advanced control systems than ever before, with proven reliability based on the continued research and development.



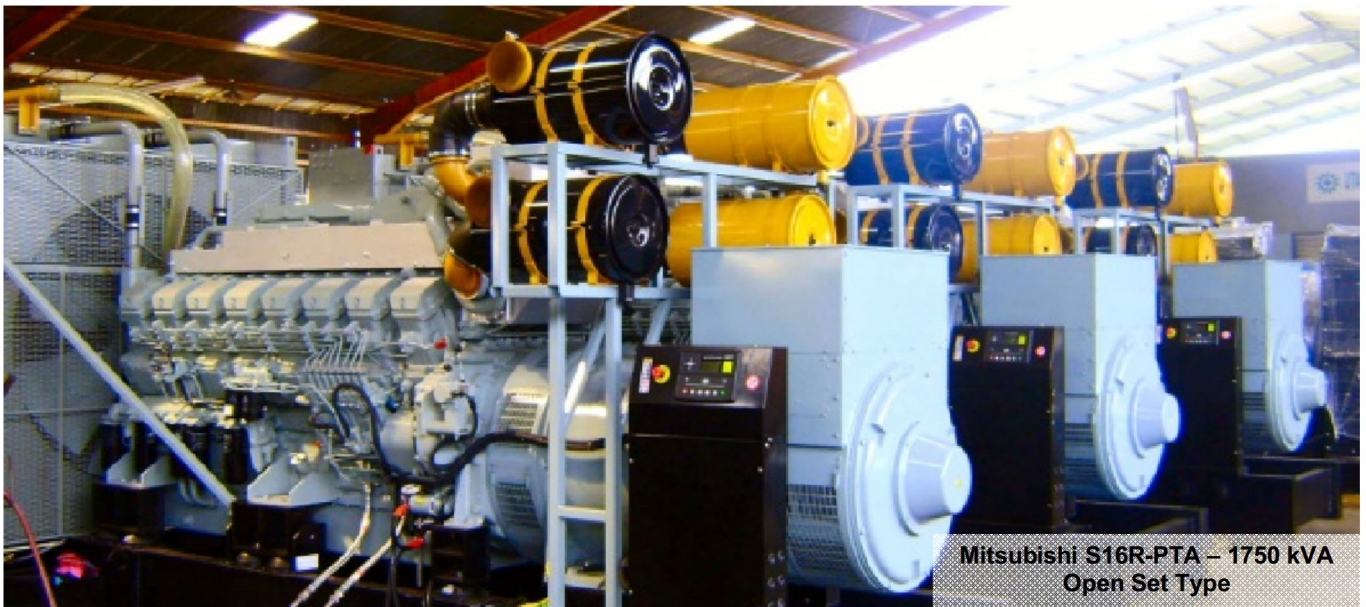
The best performance-matched engine system configured with Mitsubishi diesel engines and Mitsubishi turbochargers, which are engineered and manufactured in the same facility, is certain to result in the high productivity and improved fuel economy in the MITSUBISHIDIESEL GENERATOR SET.

No.	Engine Family	Output Range (Prime Power Application)		Cylinders
		kVA	kWe	
1	S6A Series	450 - 500	360 - 400	L6
2	S6R Series	600 - 800	480 - 640	L6
3	S12A Series	850	680	V12
4	S12H Series	1000	800	V12
5	S12R Series	1300 - 1450	1040 - 1160	V12
6	S16R Series	1600 - 2250	1280 - 1800	V16

The quoted typical kVA / kWe ratings are based on typical generator efficiencies.
The kVA figures are calculated with a 0.8 power factor ; 1500 RPM (50 Hz) ; 220 / 380 V



Mitsubishi S12R-PTAA2 ; 1500 KVA Silent Containerized Type ISO Standard



Mitsubishi S16R-PTA – 1750 kVA Open Set Type

Yanmar Co., Ltd is a Japanese diesel engine manufacturer with more than 100 years of history. The engines are used in a wide range of applications. Yanmar is for the most part a corporation specializing in diesel engines. Yanmar engine is with compact structure, simple operation and low emission, high reliability and fuel efficiency. As small power generating set, it is widely applied in the area of industry, railway, telecom, and construction and so on. TNV Series engine delivers a host of new features to bring the acclaimed "clean and silent". The Yanmar TNV Series offers a range of new engine improvements to make this popular work horses even more efficiency, more quiet and more refined than ever.



No.	Engine Family	Output Range (Prime Power Application)		Cylinders
		kVA	kWe	
1	TNM Series	6,3	5,04	L3
2	TNV Series	8 - 67,5	6,4 - 54	L3-L4

The quoted typical kVA / kWe ratings are based on typical generator efficiencies.
The kVA figures are calculated with a 0.8 power factor ; 1500 RPM (50 Hz) ; 220 / 380 V



Yanmar 4TNV98-GGE
35 kVA



Ever since the founding of the company in 1890 as a manufacturer of a cast-iron water supply pipelines, **Kubota Corporation** has continuously contributed to the progress of society through its manufacturing activities and technological developments. Kubota started producing diesel engines to meet the needs of people who demanded for more powerful engines. Throughout the years, Kubota has always produced the most technologically advanced engines possible.

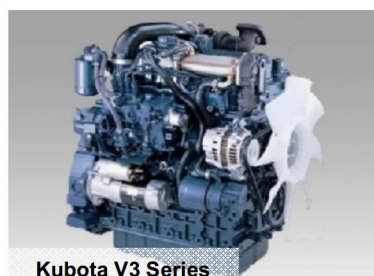


No.	Engine Family	Output Range (Prime Power Application)		Cylinders
		kVA	kWe	
1	05 Series	5 - 10	4 - 8	3 - 4
2	03 Series	15 - 20	12 - 16	3 - 4
3	V3 Series	30	24	4

The quoted typical kVA / kWe ratings are based on typical generator efficiencies.
The kVA figures are calculated with a 0.8 power factor ; 1500 RPM (50 Hz) ; 220 / 380 V



Kubota 03 Series



Kubota V3 Series

The Doosan Group, founded in 1896. The company began as the Park Seung Jik Store in 1896 in Baeogai (now Jongno 4-ga, Seoul). Doosan Infracore started making Korea's first diesel engines in 1958 and has been expanding its business ever since. Doosan Infracore supplies global customers with diesel and CNG engines for commercial vehicles, industrial machinery, generator sets and marine. Now, Doosan Infracore introduces new engines for generator sets; The "DP Series". The DP Series is the Doosan Infracore's new engines for generator sets offering power range between 86 to 828 kW.

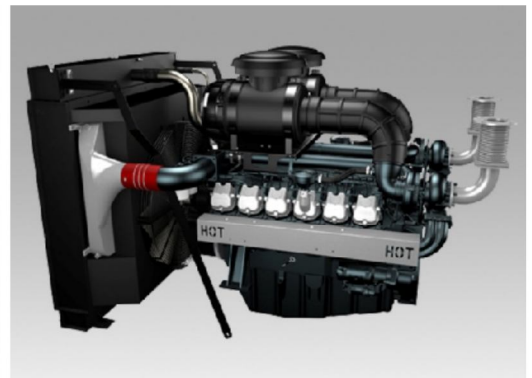


No.	Engine Family	Output Range (Prime Power Application)		Cylinders
		kVA	kWe	
1	066 Series	82 - 114	65 - 92	L6
2	086 Series	153 - 228	123 - 183	L6
3	126 Series	274 - 304	219 - 243	L6
4	158 Series	365 - 526	292 - 421	V8
5	180 Series	571 - 635	457 - 508	V10
6	222 Series	642 - 744	513 - 595	V12

The quoted typical kVA / kWe ratings are based on typical generator efficiencies.
 The kVA figures are calculated with a 0.8 power factor ; 1500 RPM (50 Hz) ; 220 / 380 V



Doosan 222 Series



Doosan P222LE Generating Set – 600 kVA

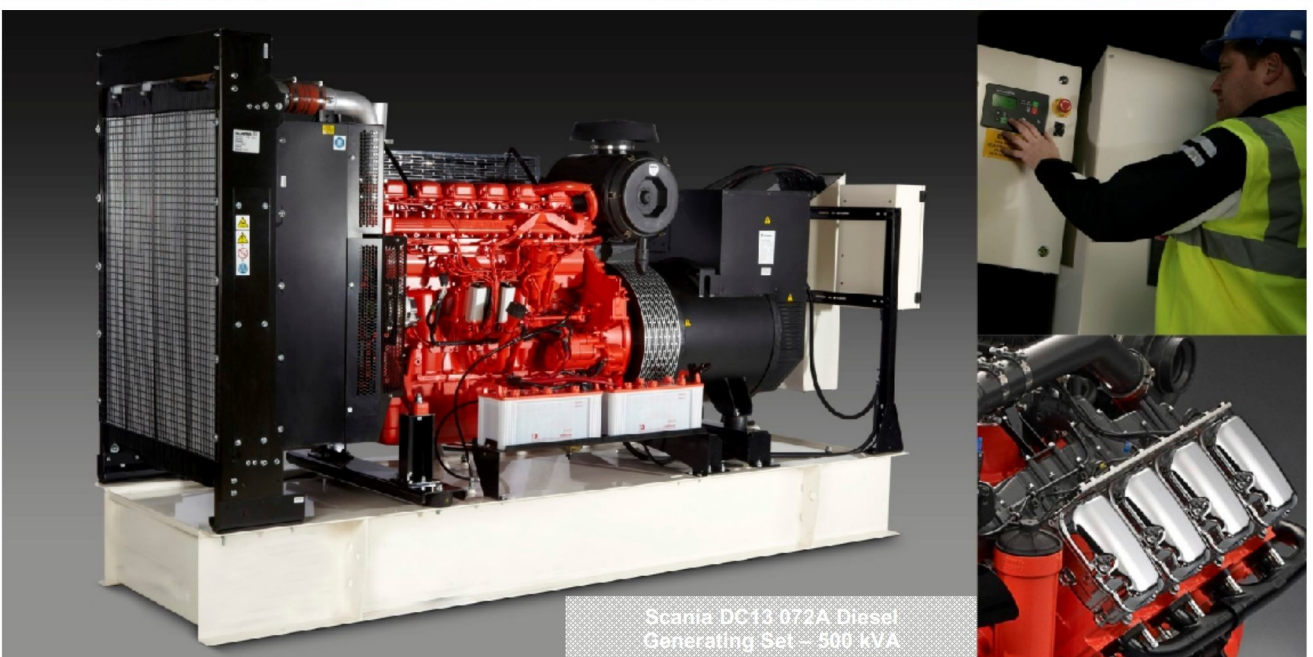
Scania was founded in 1891. Scania operates in about 100 countries and has more than 42,000 employees. Scania is represented worldwide by approximately 100 national distributors, who organise sales and workshop services.



Today Scania is one of the world's leading engine manufacturers. The demand for prime power and standby power generation is constantly growing. In either case – wherever there is a critical need for dependable, fuel-efficient workhorses that require a minimum of service and maintenance – Scania engines can provide for power generation. Scania offer a comprehensive range of engines covering requirements up to 700 kVA for prime power.

No.	Engine Family	Output Range (Prime Power Application)		Cylinders
		kVA	kWe	
1	DC09 Series	253 - 329	202 - 263	L5
2	DC13 Series	366 - 503	290 - 402	L6
3	DC16 Series	500 - 700	400 - 560	V8

The quoted typical kVA / kWe ratings are based on typical generator efficiencies.
The kVA figures are calculated with a 0.8 power factor ; 1500 RPM (50 Hz) ; 220 / 380 V



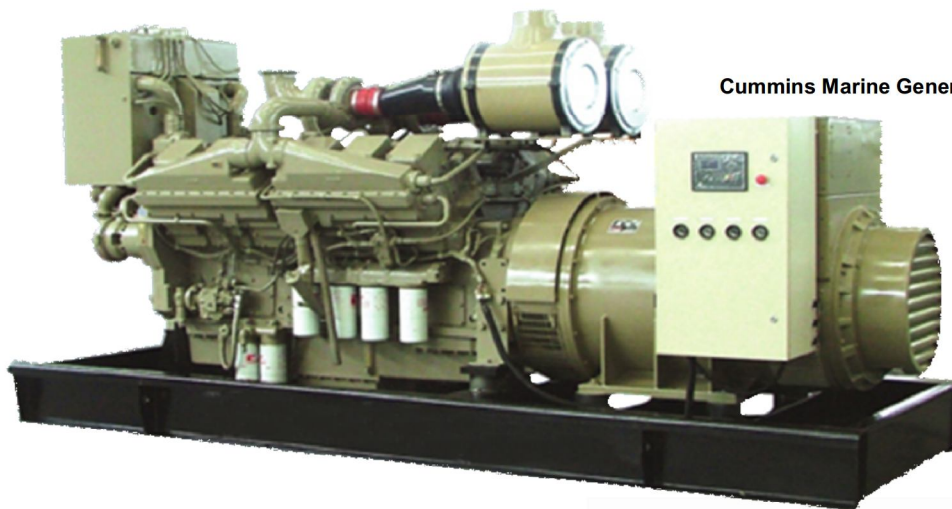
Scania DC13 072A Diesel Generating Set – 500 kVA

CUMMINS MARINE GENERATOR SET



No.	Marine Engine Family	Output Range (Prime Power Application)		Cylinders
		kVA	kWe	
1	B Series	25 - 112,5	20 - 90	4L - 6L
2	C Series	125 - 150	100 - 120	6L
3	L Series	187,5 - 225	150 - 180	6L
4	NTA855 Series	250 - 350	200 - 280	6L
5	K19 Series	375 - 500	300 - 400	6L
6	K38 Series	625 - 1000	500 - 800	12V

The quoted typical kVA / kWe ratings are based on typical generator efficiencies.
The kVA figures are calculated with a 0.8 power factor ; 1500 RPM (50 Hz) ; 220 / 380 V



Cummins Marine Generator Set – KTA 38 Series

Cummins Marine Generator Set – NTA855 Series



ETECH POWER Available Alternator

STAMFORD

AvK

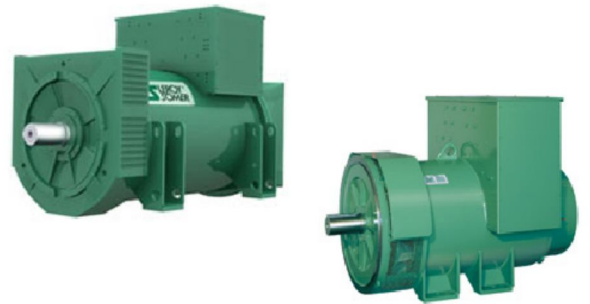
Cummins Generator Technologies (formerly Newage AVK) has nearly one hundred years of experience in building electrical machines on its main manufacturing site in Stamford, United Kingdom. Prior to the merge with AVK, Newage (the name created from the full title, Northern Electric Wireless and General Engineering Company) was founded in Manchester, UK in 1935 to manufacture alternator sets and air compressors. Through manufacturing and international expansion of distribution in the 1960s and 1970's and acquisition and corporate restructuring in the 1980s and 1990s Newage was acknowledged as the world leader in alternators in the range 8 kVA to 2000 kVA.

Cummins Generator Technologies offer premium quality alternators in the range 2 to 10,000kVA. Our family of brands - **STAMFORD**, **AvK** and **MARKON** are known for their robust build, reliable performance and versatile configurations.

**LERROY
SOMER**

Leroy-Somer is one of the world's leading manufacturers in electromechanical and electronic drive systems and the world leader in industrial alternators. A subsidiary of the Emerson Group, Leroy-Somer is a French company which employs 9700 people in 32 production units and 470 sales and service outlets worldwide. In 2011, the company achieved a turnover of €1292 million.

Industrial range, Low & medium Voltage, 50 & 60Hz, 4 & 6 pole, from 10 kW to 3900 kW, these alternators are designed for gensets driven by diesel or gas engines. These generators are used in numerous fields such as rental & construction, marine, telecom, commercial, health, etc.



Other Alternator

meccalte

marathon
Generators





DEEP SEA ELECTRONICS

ETECH POWER Genset Controller DSE Genset®

ETECH POWER Standard Supply



DSE7320

Auto Mains (Utility) Failure Control Modules

The DSE7320 is a feature packed Auto Mains (Utility) Failure Control Module designed to control single diesel or gas gen-set applications.

Optional Supply



DSE8610

Synchronising & Load Sharing Control Module

The DSE8610 is an intelligent mono display auto start load share control module packed with industry leading features to enhance multi-set control. **The module can be synchronised with up to 32 generators within the same system.**



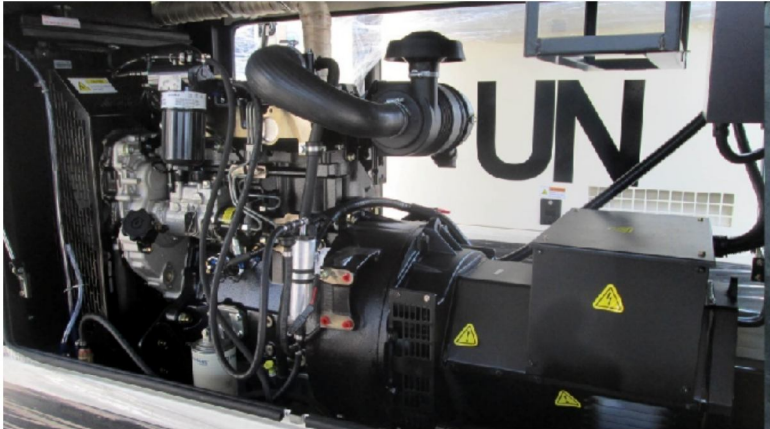
DSE8620

Synchronising & Load Sharing Auto Mains (Utility) Failure Control Module

The DSE8620 is an intelligent mono display auto mains (utility) failure load share control module packed with industry leading features to enhance **paralleling single gensets with a mains (utility) supply.**

The DSE 8620 automatically controls the change over between mains (utility) and generator power and can also be configured to run a generator in synchronisation with a mains (utility) supply.

ETECH POWER Portfolio & Project



18 Unit Perkins 20 kVA – 4 Unit Perkins 30 kVA - Project United Nations (PBB)



2 Unit MTU 1500 kVA
Project Bank Indonesia

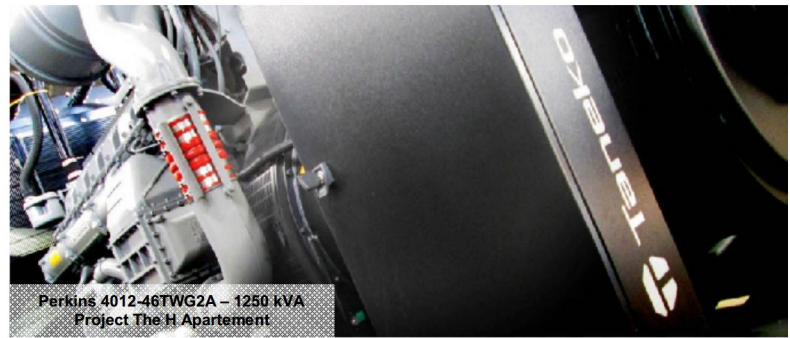


Mitsubishi 1500 kVA Containerized
ISO Standard – Project Cargill



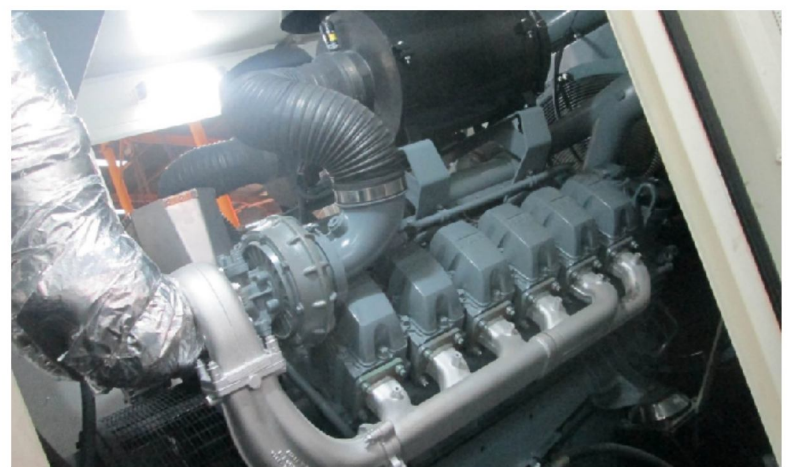


3 Unit MTU 16V 4000 G63
2000 kVA – Project SDC Summarecon



Perkins 4012-46TWG2A – 1250 kVA
Project The H Apartement

Perkins 4012-46TWG2A – 1250 kVA
Project Brawijaya University



MAN D2862LE223-1000 kVA (STP)
Project RSI SitiRahma Padang



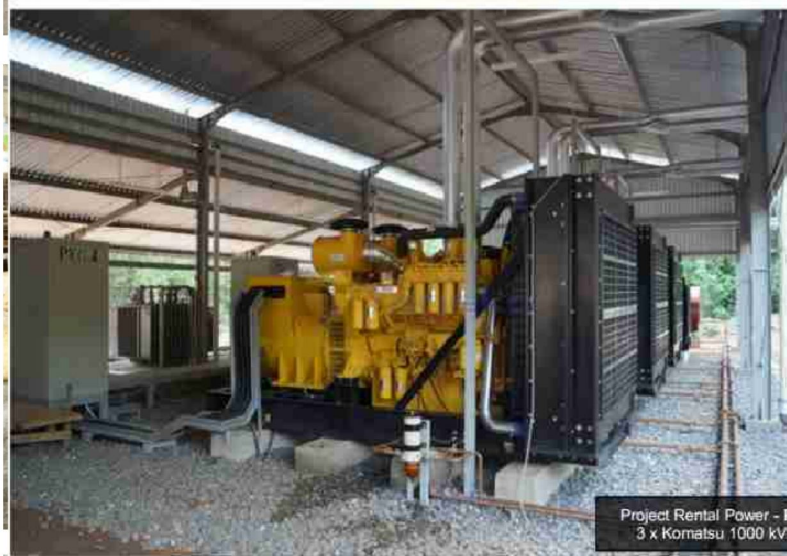
Perkins 2506C-E15TAG2 – 500 kVA
Project Luwak White Coffe



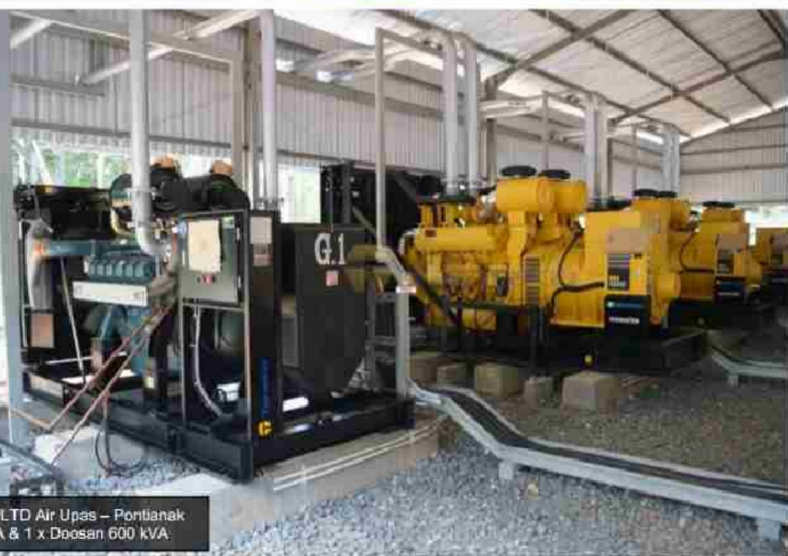
Perkins 1250 kVA



MTU 1000 kVA



Project Rental Power - PLTD Air Upas - Pontianak
3 x Komatsu 1000 kVA & 1 x Doosan 600 kVA



4 x Perkins 1250 kVA



Cummins USA 1000 kVA



Perkins 2250 kVA, Silent Containerized
ISO Standard

ETECH POWER Projects

No	Project Name (User)	Date of Delivery	Engine	Rating
1	Kualanamu International Airport - Medan	16/01/2011	MTU	5 x 2000 kVA
2	Kualanamu International Airport - Medan	16/01/2011	MTU	2 x 1500 kVA
3	Semen Gresik	13/09/2011	MTU	3000 kVA - 6,6 kV
4	Summarecon Mall Serpong	19/07/2011	MTU	3 x 2000 kVA
5	PT. SulfindoAdiusaha	25/08/2011	MTU	2000 kVA
6	Aerofood Catering Service (ACS) SoekarnoHatta International Airport	10/09/2011	MTU	2000 kVA
7	Aerofood Catering Service (ACS) I GustiNgurahRai International Airport – Bali	06/09/2012	MTU	1500 kVA
8	National Brain Centre - Jakarta	27/04/2012	MTU	3 x 1000 kVA
9	Sultan ThahaSyiafuddin Airport - Jambi	18/10/2012	MTU	2 x 800 kVA
10	Sherwood Apartement - Summarecon Jakarta	12/09/2012	MTU	2 x 900 kVA
11	PTPN X - Bioethanol Plant Mojokerto	21/01/2013	Mitsubishi	3 x 1750 kVA
12	PLTD Sanggeng Papua	09/02/2013	MTU	2 x 1650 kVA
13	Scientia Office Park Summarecon	01/04/2013	MTU	1000 kVA
14	Sriwijaya Air Tangerang	16/05/2013	MTU	2000 kVA
15	IMECO Inter Sarana	31/05/2013	Mitsubishi	2000 kVA
16	PLTD Kangean, Madura (Rental Power)	01/06/2013	Doosan	400 kVA
17	PLTD Kangean, Madura (Rental Power)	01/06/2013	Doosan	2 x 600 kVA
18	NAVITAS - WikaPoomalaa	11/06/2013	MTU	800 kVA
19	ACS Juanda International Airport	06/07/2013	MTU	1250 kVA
20	NAVITAS - Total Oil Myanmar	27/07/2013	MTU	800 kVA
21	KobinKeramikIndustri	13/09/2013	Cummins	2 x 1250 kVA
22	Airindo	17/09/2013	Mitsubishi	1750 kVA
23	Electronic City	16/09/2013	Perkins	600 kVA
24	Cargill Rehobat	30/09/2013	Mitsubishi	1750 kVA
25	RSUD Sidoarjo	30/09/2013	Perkins	1000 kVA
26	Mabes TNI AL Cilangkap Jakarta	03/10/2013	Perkins	1000 kVA
27	KejaksanaanTinggi Palembang	08/10/2013	Perkins	2 x 450 kVA
28	Mandiri Prima Teknik	19/10/2013	Doosan	600 kVA
29	SDC SummareconSerpong	12/11/2013	MTU	3 x 2000 kVA

30	Coolumbia International Hospital – Semarang	06/11/2013	Perkins	1500 kVA
31	Mabes TNI AL Cilangkap Jakarta	26/11/2013	Perkins	1000 kVA
32	CiputraArtpreneur - Ciputra World I	09/12/2013	Mitsubishi	2 x 1000 kVA
33	PerkampunganBudayaBetawi, Jakarta	09/12/2013	Perkins	3 x 500 kVA
34	PT. Suntory Garuda Beverage (Garuda Food)	26/12/2013	MTU	2 x 1250 kVA
35	Pluit Village Jakarta	11/01/2014	Mitsubishi	1750 kVA
36	PT Royal Abadi Sejahtera	15/01/2014	MTU	500 kVA
37	Electronic City	26/01/2014	Perkins	350 kVA
38	PT. PP (Persero) - Bank Mandiri Palembang	15/02/2014	Mitsubishi	2 x 770 kVA
39	Gajahmada Plaza	03/03/2014	MTU	1000 kVA
40	Bank Indonesia	03/03/2014	MTU	2 x 1250 kVA
41	Cargill	17/03/2014	Mitsubishi	1500 kVA
42	PT. Barata Indonesia	19/03/2014	Perkins	1000 kVA - 3,3 kV
43	PT. Hilon Felt	21/03/2014	MTU	1000 kVA
44	Anabati	28/03/2014	Mitsubishi	2000 kVA
45	PSB Summarecon	29/03/2014	MTU	1250 kVA
46	PT. PP (Persero) Bank Bangka Belitung	19/05/2014	Cummins	575 kVA
47	Mandiri Prima Teknik	20/05/2014	Mitsubishi	1750 kVA
48	PT SakabajaPanelindo	23/06/2014	MTU	500 kVA
49	Mandiri Prima Teknik	27/06/2014	Doosan	600 kVA
50	RSUD Badung Bali	14/07/2014	Perkins	2 x 1250 kVA
51	RCTI	05/08/2014	Cummins	350 kVA
52	PLTD Suluttenggo Sulawesi	28/08/2014	Deutz	3 x 250 kVA
53	Royal Kamuela Beach - NTB	29/08/2014	Perkins	2 x 500 kVA
54	WijayaKaryauntukRusunawaJatinegara	29/09/2014	Perkins	400 kVA
55	United Nations (PBB)	27/09/2014	Perkins	18 x 20 kVA
56	United Nations (PBB)	27/09/2014	Perkins	4 x 30 kVA
57	RSI SitiRahman Padang	08/10/2014	MAN	1000 kVA
58	Apartement Student Castle Yogyakarta	04/11/2014	Perkins	600 kVA
59	PT MandiriUrak Jaya	13/11/2014	Perkins	500 kVA
60	Electronic City	15/12/2014	Perkins	250 kVA

61	EDS Manufacturing Indonesia	05/12/2014	Mitsubishi	1000 kVA
62	PT. Jaya Karya	14/12/2014	MTU	4 x 800 kVA
63	BLKI Jakarta Barat	17/12/2014	MTU	500 kVA
64	Nindya Karya untuk Universitas Brawijaya	23/12/2014	Perkins	1250 kVA
65	PLTD Air Upas (Rental Power)	15/10/2014	Komatsu	3 x 1000 kVA
66	PLTD Air Upas (Rental Power)	15/10/2014	Doosan	600 kVA
67	IPAM Badung - Bali	22/04/2015	Perkins	1250 kVA
68	The H Apartement Jakarta	28/03/2015	Perkins	1250 kVA
69	Prima Komponen Indonesia	11/03/2015	MTU	1250 kVA
70	Petrokimia Gresik Hospital	05/01/2015	Perkins	750 kVA
71	BEMI Energy - St. Regis	20/04/2015	Mitsubishi	2 x 1250 kVA (ESP)
72	BEMI Energy - St. Regis	14/05/2015	Mitsubishi	6 x 2000 kVA (ESP)
73	Traya Tirta Cisadane (PDAM Group)	07/05/2015	Mitsubishi	1700 kVA - 6,6 kV
74	Semen Gresik	11/08/2015	MTU	3000 kVA - 6,6 kV
75	Adhi Karya - RSUD Indera Bali	15/09/2016	Cummins US	1000 kVA
76	Carefour Medan	11/01/2016	Mitsubishi	800 kVA
77	RSUD Ibnu Sina Gresik	11/11/2016	Perkins	1000 kVA
78	Spring Lake Summarecon	13/01/2016	MTU	2 x 1500 kVA
79	PT. Etana Biotecnologies Indonesia	27/04/2017	Perkins	2 x 1000 kVA
80	PT. WIKA Gedung – The MAJ Collection	21/05/2017	Mitsubishi	1250 kVA
81	PT. WIKA Gedung – The MAJ Collection	21/05/2017	MTU	650 kVA
82	Polda Jateng	10/07/2017	Perkins	1000 kVA
83	PR Jaya Makmur	04/04/2017	Perkins	1500 kVA
84	WIKA – Cakra – KSO Project Wisma Atlet	20/05/2017	MTU	2 x 1250 kVA
85	KSO Adhi Karya-Jaya Kontruksi-Penta Project Wisma Atlet	08/05/2017	MTU	2 x 600 kVA
86	PT. Alkonusa Teknik Inti	18/07/2017	Cummins	2 x 625 KVA
87	PT. Aneka Servis	Partial Delivery	Cummins	10 x 350 KVA
88	PT. ADHI KARYA (EPC DEPARTMENT) – PTPN IX (PG Mojo)	25/09/2017	Mitsubishi	1250 KVA
89	Adhi Karya – Project GBK	20/05/2017	Perkins	2 x 1000 kVA
90	Plasa Renon Bali	31/05/2017	Perkins	1000 kVA

91	PT. Chandra Cakra Sentosa	29/04/2017	Perkins	2 x 1000 kVA
92	PT. Brantas Abipraya	12/06/2017	Perkins	1650 kVA
93	PT. Bianglala Bali	30/12/2017	Cummins	900 kVA
94	Pertamina TBBM Boyolali	22/12/2017	Mitsubishi	1000 kVA
95	Bormindo Nusantara	16/01/2018	Deutz	2 x 250 kVA 150 KVA
96	Air Nav Project	08/03/2018	Perkins	2 x 250 kVA 300 kVA
98	PT. Bharata Indonesia	T.B.A	Perkins	2 x 1000 kVA
99	INKA (Industri Kereta Api) Persero	Partial Delivery	MTU	30 x 500 kVA

and many more....

***ORDER YOUR GENSET
NOW...***

PT. Engineering Teknologi Indonesia

Office

Alamanda Tower Lt. 28-D
Jl. TB Simatupang Kav. 23-24 Cilandak Barat
Jakarta 12430 - Indonesia
Ph. +62-21- 75905072 / +62-21- 75905073

www.etechpower.co.id



Powered by :



Also available :

